

24 Market Place East Finchley, London, N2 8BB

A ground floor 2 bedroom maisonette with own garden. Ideally situated within walking distance of local shops and tube station. Comprises reception room with fireplace, modern kitchen diner, two bedrooms, contemporary bathroom and own garden. Wood flooring. Fully double glazed

Unfurnished - Available 6 May 2025

Property will be newly painted

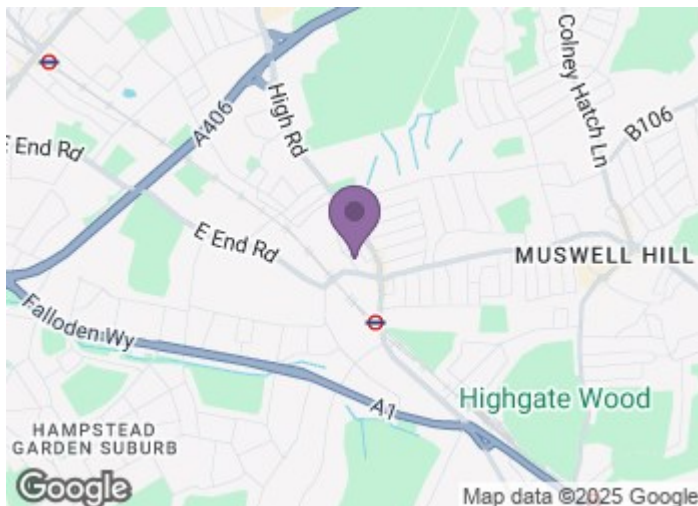
£2,200 Per month

24 Market Place

East Finchley, London, N2 8BB



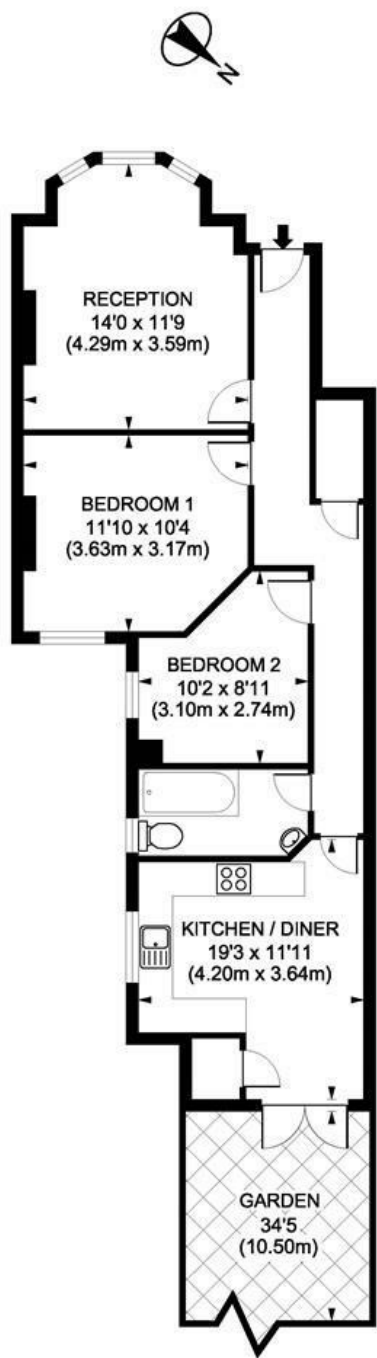
- Great Location
- Wood Flooring
- Private Garden
- Available 6th May
- Unfurnished



[Directions](#)



Floor Plan



GROUND FLOOR

Market Place, London, N2
Gross internal area 667 sq ft/62 sq metres

Whilst every attempt has been made to ensure the accuracy of the floorplan shown, all measurements, positioning fixtures, fittings and any other data shown are an approximate interpretation for illustrative purposes only and are not to scale. No responsibility is taken for any error, omission, mis-statement or use of data shown.

These particulars, whilst believed to be accurate are set out as a general outline only for guidance and do not constitute any part of an offer or contract. Intending purchasers should not rely on them as statements of representation of fact, but must satisfy themselves by inspection or otherwise as to their accuracy. No person in this firms employment has the authority to make or give any representation or warranty in respect of the property.

Energy Efficiency Rating		
	Current	Potential
Very energy efficient - lower running costs		
(92 plus) A		
(81-91) B		
(69-80) C		
(55-68) D		
(39-54) E		
(21-38) F		
(1-20) G		
Not energy efficient - higher running costs		
	65	77
England & Wales		
EU Directive 2002/91/EC		